

# Social structure in late 17<sup>th</sup> century Cheapside

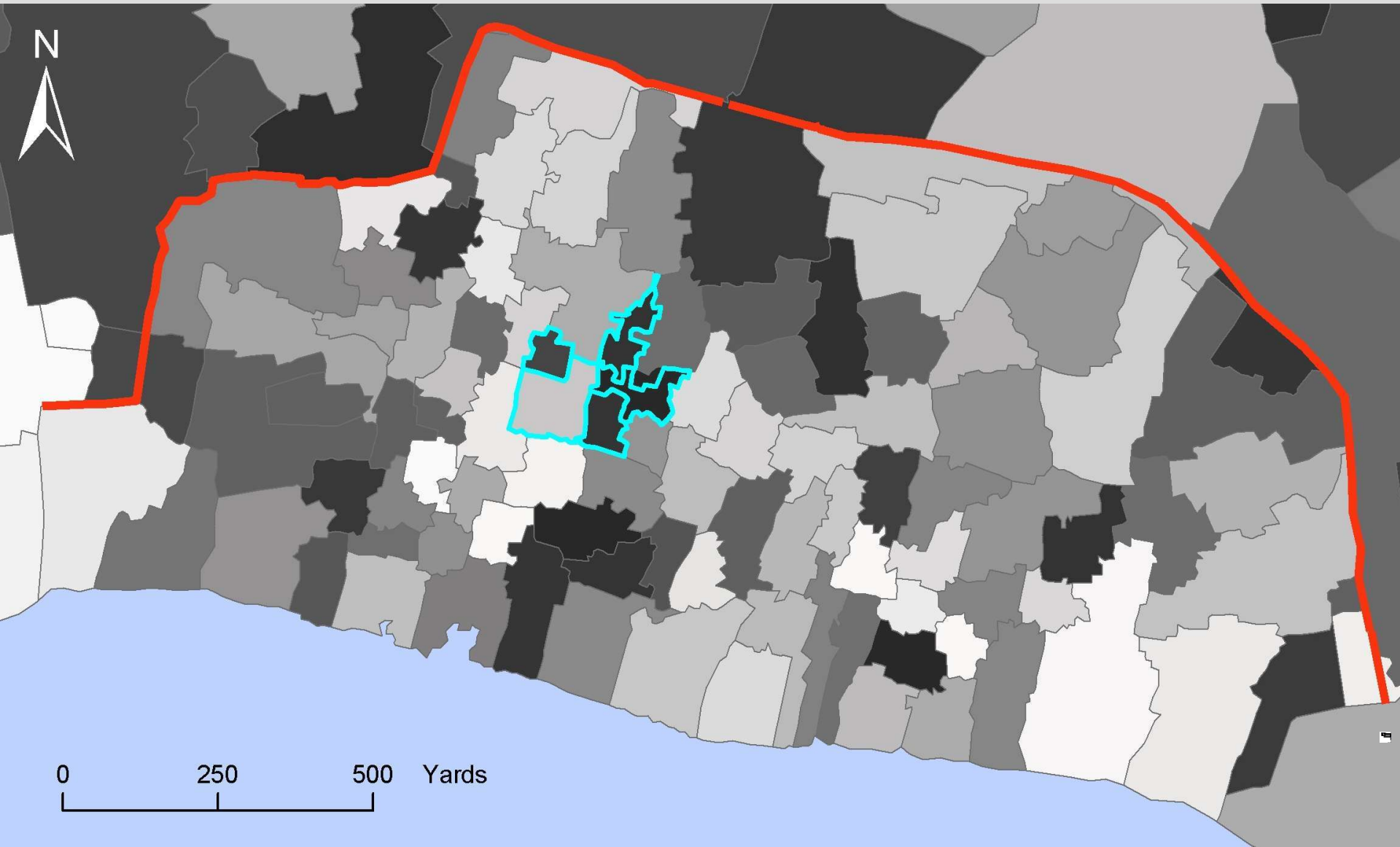
Gill Newton

Cambridge Group for the History of Population and Social Structure



*Mercer's hall and shop fronts in 17<sup>th</sup> century Cheapside*

# City of London Parish boundary map, showing the location of the 5 Cheapside parishes



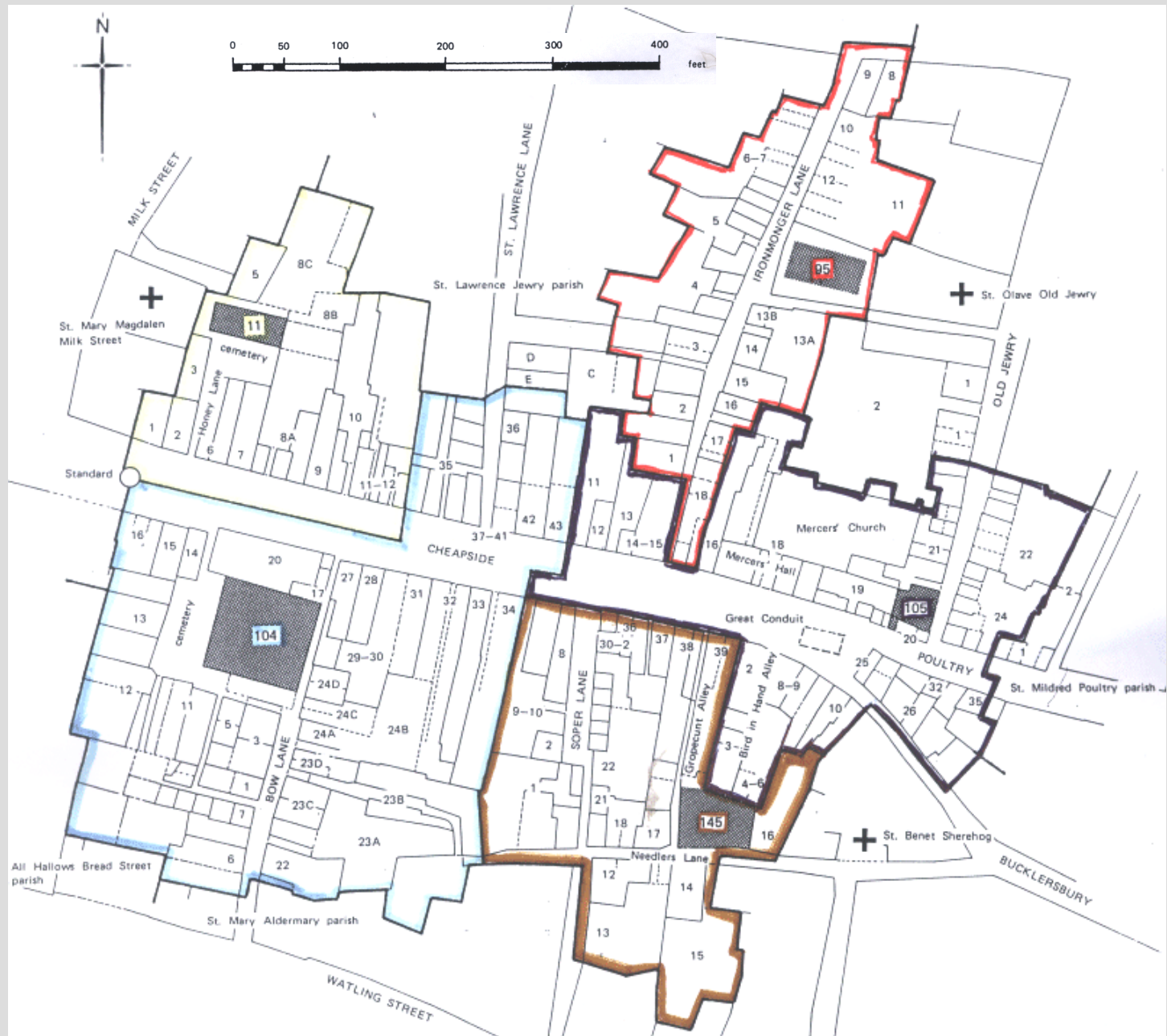
# Difficulties of Family Reconstitution in London

- High population turnover

# Difficulties of Family Reconstitution in London

- High population turnover
- Administrative complexity post-Fire

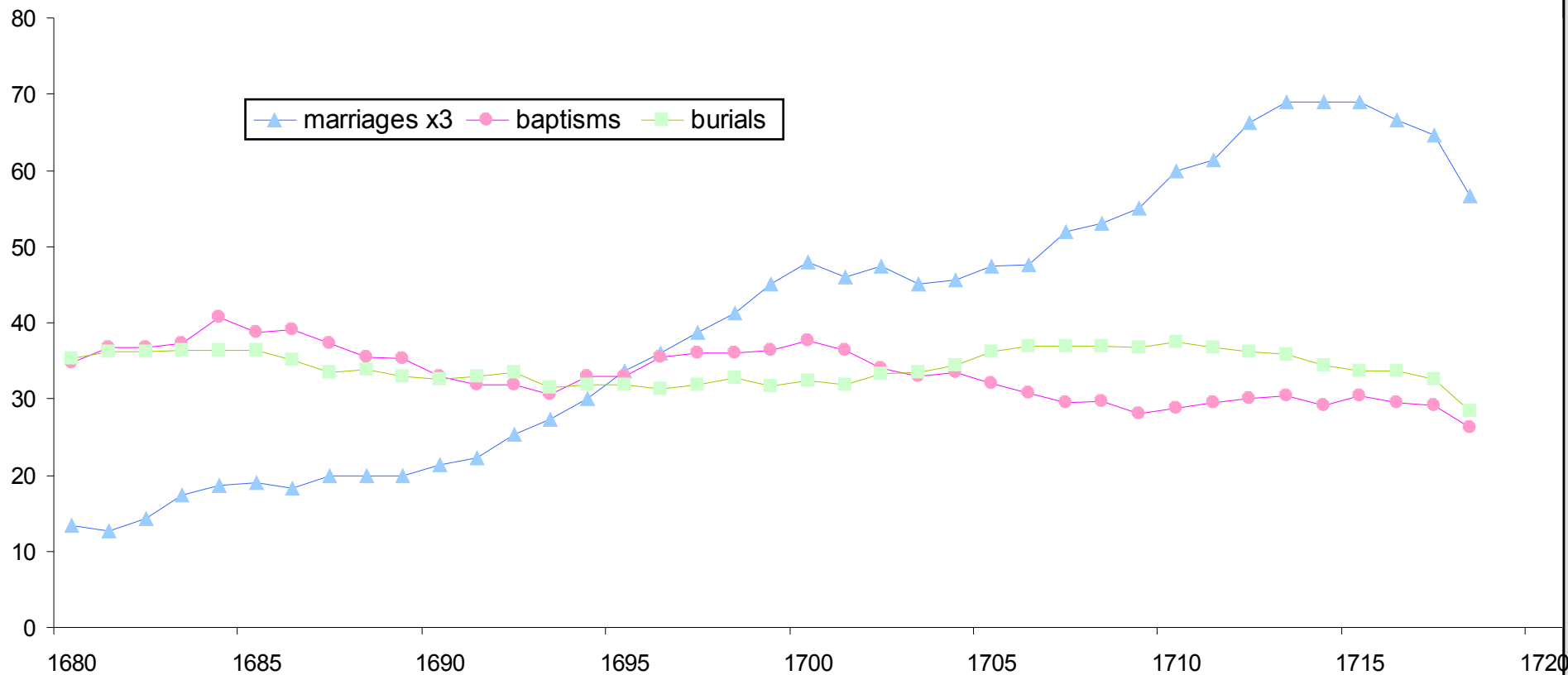
# The Cheapside parishes before the Fire: a closer look



# Difficulties of Family Reconstitution in London

- High population turnover
- Administrative complexity post-Fire
- Marriages & burials outside home parish

# Marriages outstripping 3 united parishes burials and baptisms 1680-1720



# Family size (parity)

	Mean parity at death of either spouse	N families
Cheapside 1538-1721	4.1	95
Clerkenwell 1550-99	2.5	83
Clerkenwell 1600-49	2.7	179
Clerkenwell 1650-99	3.0	117
Clerkenwell 1700-49	3.1	309



# Linking Family Reconstitutions to Marriage Duty Assessments

## Marriage Duty Assessment

### all residents

- cross-sectional: 1695
- includes servants/other unmarrieds
- includes Nonconformists

## Family reconstitution

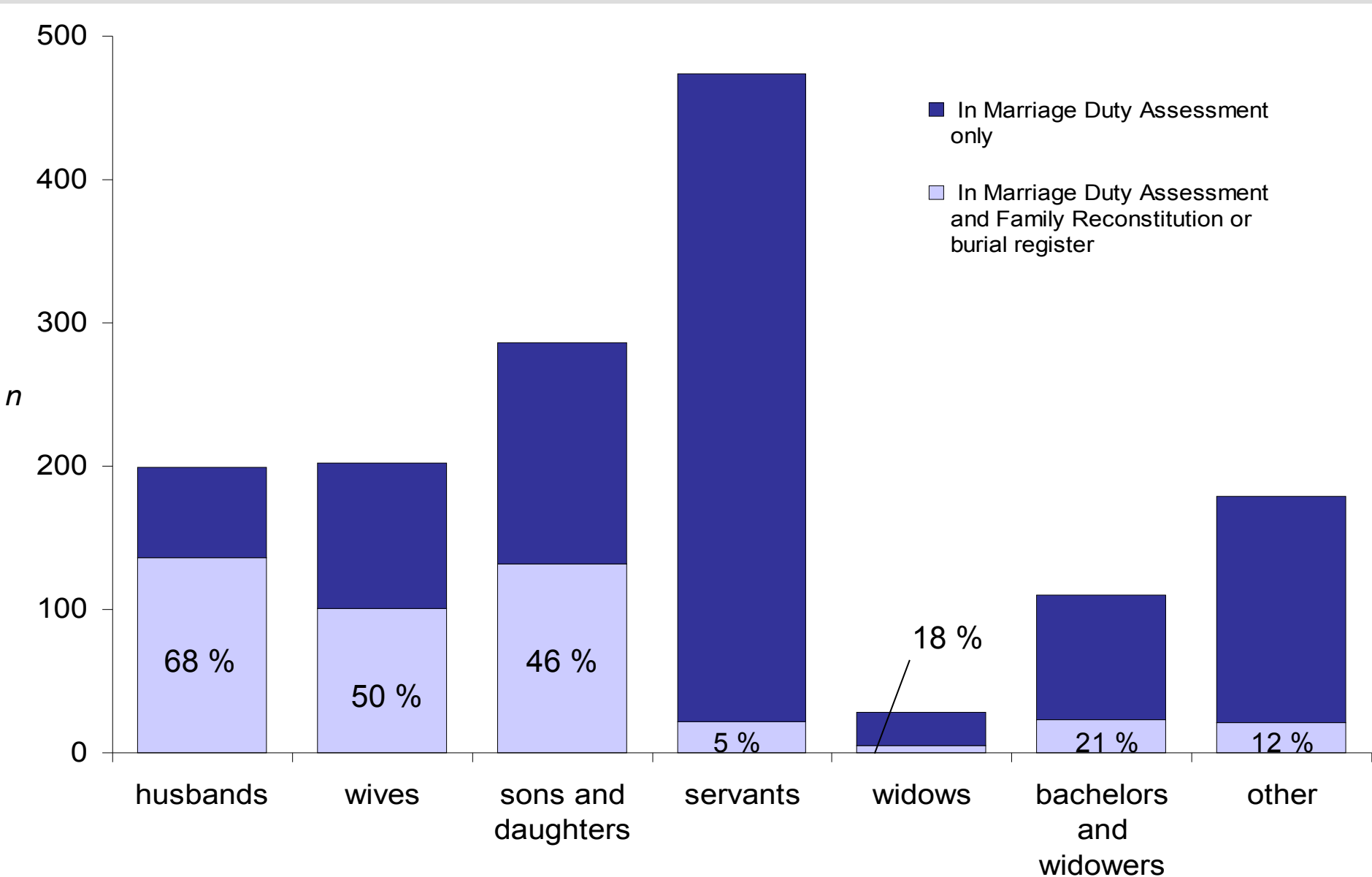
### biological families

- longitudinal: 1548-1721
- baptisms, burials and marriages
- Anglican

- MDA family – **current** reconstituted family
- MDA adults – **past** (childhood) reconstituted family
- MDA unmarrieds – **future** reconstituted family

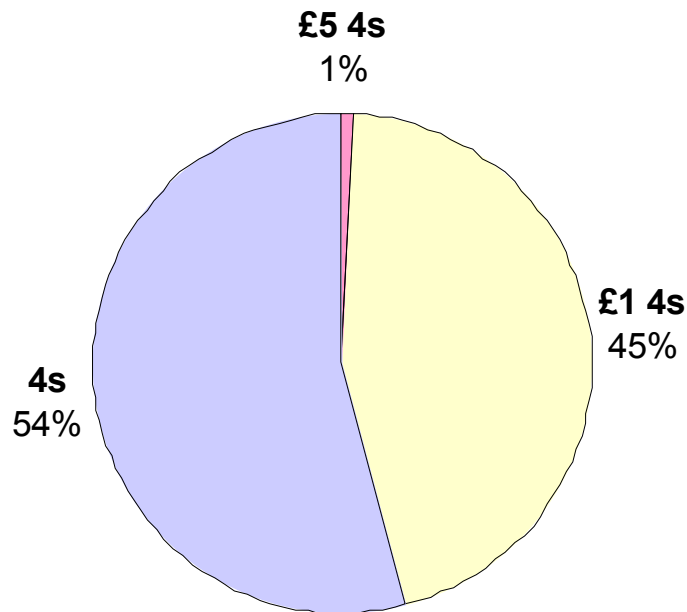
Types of link

# Marriage Duty Assessment people matched in Reconstitutions

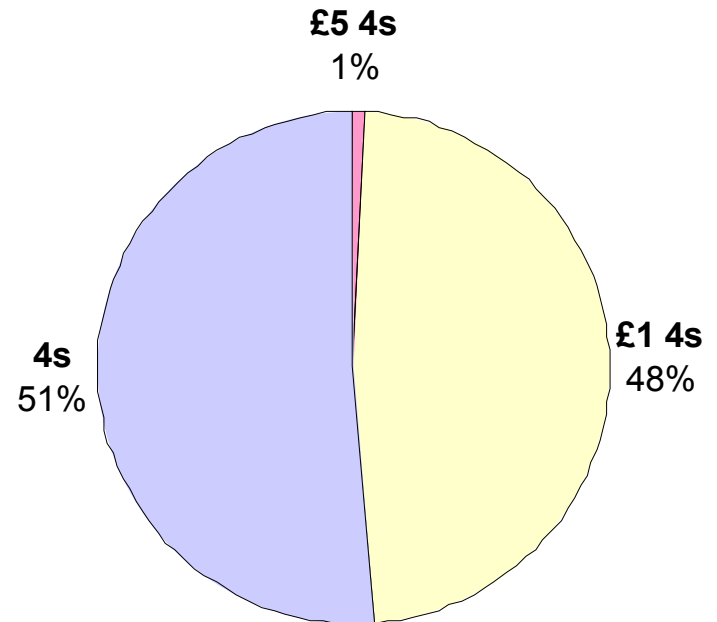


# Are the 1695 inhabitants traceable in the parish registers of equal wealth to those not found?

All 225 heads of household by Assessment taxband



144 matched heads of household by Assessment taxband



# Occupational structure by taxband: families listed in 1695 Assessment and in continuous observation from parish records

Occupational category	%(n) in £5 4 or £1 4 band	%(n) in 4s taxband	common occupations
professional	100 (1)	0	attorney
wholesale dealer (wares unspecified)	100 (14)	0	mercator, merchant
cloth or apparel seller/dealer	96 (24)	4 (1)	linen draper, haberdasher
luxury goods seller/manufacturer	75 (3)	25 (1)	perfumer, watchmaker
other shopkeeper	50 (3)	50 (3)	apothecary, stationer
manufacturing	21 (3)	79 (11)	pattern maker, blacksmith
food or drink seller	8 (1)	92 (11)	victualler, poulterer
performing services for others	8 (1)	92 (12)	barber, book keeper, porter
unknown	34 (12)	66 (23)	
<b>Total</b>	<b>(62)</b>	<b>(62)</b>	